

Southdown Joint Venture (SDJV) Southdown Magnetite Project Mine Closure Information Sheet

October 2022

The Southdown Project is a joint venture between Grange Resources (70%) and SRT Australia Pty Ltd (30%) – this partnership is known as the Southdown Joint Venture (SDJV).

Grange Resources Limited (Grange Resources) is Australia's most experienced magnetite producer with over 50 years of mining and production from its Savage River Mine in Tasmania.

SRT Australia Pty Ltd is jointly owned by Sojitz Corporation, a Japanese global trading company, and Kobe Steel, a major Japanese steel maker.

Mine Closure Planning

Mine closure planning starts from the earliest stages of a project. This is done to ensure that when the mine closes, the site is safe, stable, non-polluting and has a functional land use that has been agreed on with the regulators and the local community.

The current approval for the project (Ministerial Statement 816, *Environmental Protection Act 1986*) requires the development of a mine closure planning process and rehabilitation criteria for the mine in accordance with *Condition 10: Mine Closure and Rehabilitation* including:

- Landform design (contours, batter of slopes etc)
- Rehabilitation completion criteria to provide a self-sustaining functional ecosystem to meet:
 - Flora and vegetation re-established at a ratio of 1:1 with no less than 70% cover
 - Weed species to be no greater than existed prior to implementation of the project
 - No new species of weeds or Flora diversity no less than 70% of pre-mining vegetation

The Mine Closure Plan will be prepared in accordance with *Part 1 Statutory Guidelines for Mine Closure Plans* (DMIRS 2020). It will form part of the Mining Proposal submission to the Department of Mines, Industry Regulation and Safety (DMIRS) who will review and approve prior to mining commencing.

'A mine closure plan is a dynamic document that needs to be regularly reviewed and refined over time to ensure that it reflects the current knowledge relevant to the development and rehabilitation status of the mine.' (DMIRS 2020)

Stakeholder and Community Engagement

Engaging with stakeholders and the community to obtain input to mine closure is a key component of mine closure planning. Early and continuous engagement with stakeholders enables Grange Resources to better understand and manage stakeholder expectations and potential risks and opportunities associated with closure of the mine.

As per the *Statutory Guidelines for Mine Closure Plans* the mine closure plan must include information on the engagement that has been undertaken with stakeholders relevant to rehabilitation and mine closure, a record of the engagement undertaken to date and a strategy for ongoing engagement (DMIRS 2020).

Grange is undertaking extensive stakeholder and community engagement as part of the environmental approvals process and is committed to raising awareness of the project, providing opportunities for asking questions and receiving feedback, and addressing concerns and opportunities.

Grange will continue to engage stakeholders and the community as the project progresses.

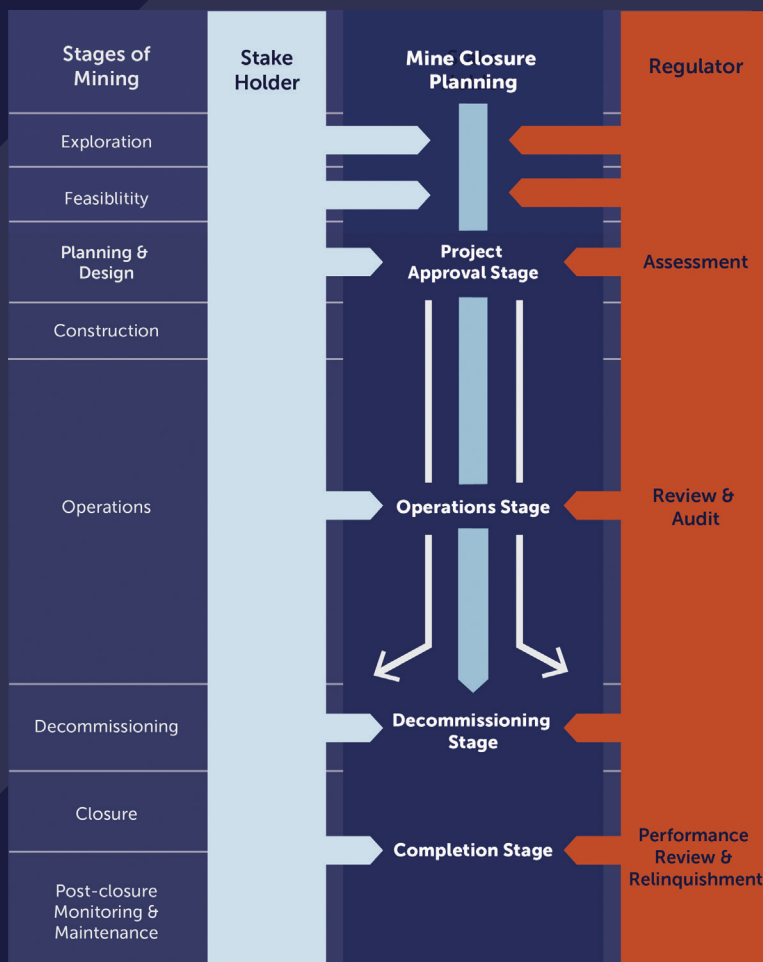


Figure adapted from DITR 2006, ICMM 2008

Contact Information

To stay informed of upcoming engagement opportunities or learn more about the project, visit the Southdown Magnetite Project webpage at www.grangeresources.com.au/operations/southdown.

If you wish to speak with a member of the project team, please email info@grangeresources.com.au phone **08 9841 4255** or visit the Albany Project Office at **31 Albany Hwy, Albany, WA**



We acknowledge the Noongar Menang people as traditional custodians of this region and recognise their continuing connection to land, water and culture. We pay our respects to Aboriginal communities and cultures, and to their Elders past, present and emerging.