

Southdown Joint Venture (SDJV) Southdown Magnetite Project Slurry and Return Water Pipeline

Information Sheet October 2022

The Southdown Project is a joint venture between Grange Resources (70%) and SRT Australia Pty Ltd (30%) – this partnership is known as the Southdown Joint Venture (SDJV).

Grange Resources Limited (Grange Resources) is Australia's most experienced magnetite producer with over 50 years of mining and production from its Savage River Mine in Tasmania.

SRT Australia Pty Ltd is jointly owned by Sojitz Corporation, a Japanese global trading company, and Kobe Steel, a major Japanese steel maker.

The Slurry Pipeline - a safe and proven transport solution

The slurry pipeline proposal is part of Southdown Joint Venture's commitment to ensuring that the proposed mining operation is conducted in an environmentally responsible manner. The proposal involves transporting the magnetite concentrate for 110 kilometres through an underground slurry pipeline to the Port of Albany. The pipeline method of transport is an energy efficient and safe transport solution.

The slurry

The magnetite ore, once extracted from the ground, will be crushed and ground before going through a number of stages of beneficiation, producing high-grade magnetite concentrate. The concentrate will be mixed with water and pumped from the plant to the Port of Albany via the slurry pipeline.

The Return Water Pipeline

Once the concentrate reaches the Port, it will be filtered and stored ready for shipping. The excess water will be pumped back to the mine site in a return water pipeline, which runs parallel to the slurry pipeline. Around 85% of water pumped with the slurry will be returned to the mine site for re-use.

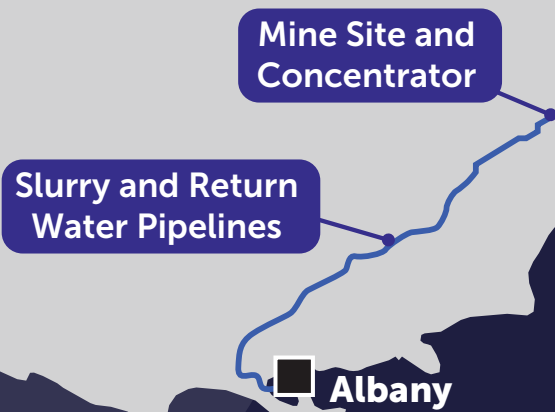
The pipeline route

The majority of the land for the proposed pipe-route is on cleared agricultural farmland under private ownership. The slurry pipeline is an energy efficient transport method, eliminating the need for haulage trucks and transport trains, making it a safer option for the City of Albany and its residents.

Maintenance and erosion

There is no oxygen in the pipeline, the particle size in the slurry is very small and the slurry is slow moving, reducing erosion or corrosion. The pipeline has been proven to be safe and effective at Grange Resources' Savage River operation in Tasmania, which has been in operation for over 50 years.





Fast Facts

- Length of pipeline - approximately 110km from the mine site (Wellstead) to the Port of Albany.
- The entire length of the pipeline and concentrator will be buried underground except a small section that may be exposed to accommodate a walkway/ cycleway over Pt Melville, on the edge of Princess Royal Harbour.
- Pumping slurry through a pipeline has been used to transport magnetite ore at Grange's Savage River Operation in Tasmania, for more than 50 years and has proven to be safe and efficient. The world's longest iron ore pipeline is up to 500km in Brazil, which is also used for iron ore transportation.

Contact Information

To stay informed of upcoming engagement opportunities or learn more about the project, visit the **Southdown Magnetite Project** webpage at www.grangeresources.com.au/operations/southdown

If you wish to speak with a member of the project team, please email info@grangeresources.com.au
phone **08 9841 4255**
visit the Albany Project Office at **31 Albany Hwy, Albany, WA**

We acknowledge the Noongar Menang people as traditional custodians of this region and recognise their continuing connection to land, water and culture. We pay our respects to Aboriginal communities and cultures, and to their Elders past, present and emerging.